

.....

Lighthouse Publishing Services

Ports Of Call



And Various Oil Field Table Scraps

*Notes and Observations from the Gulf of
Mexico including some contact numbers*



This booklet is a product of a few years on the water and many more years of local knowledge. This effort is designed to give a captain something in hand as a reference. It is not intended to replace the **Coast Pilot** but to be a quick look at various Gulf Ports, Channels and Waterways in which we work.

I use the information here on a regular basis and was asked to share this data, and my experience.

CREDITS

The charts in this booklet are from MarinePlanner.com mapping/navigation website. Visit them at www.marineplanner.com and check out what they offer. Tell them Capt. JW Hudgens sent you.

SPECIAL THANKS

Thanks to Capt. Bruce Besser for encouraging me to get my captains ticket back in 1995.
Thanks to Capt. Dan Ruth for giving me a chance at bigger boats and empowering me to become a captain/manager in the Fiji Islands and Hawaii.
Thanks to Capt. Bruce Bryan for taking a risk and letting me climb aboard and learn crew boats in the Gulf of Mexico. Crewboats rock and roll !!
Special thanks to my friend John Clark, he was the one who said, "Why don't you work in the oil field, you love the water."

Thanks to Capt. Jim B. and Capt. Jerry K. for helping me edit this
Thanks also to Jon for encouraging me to write daily.

www.marineplanner.com www.captainbruce.com
www.offshoreoil.com www.pac-aggressor.com

Welcome to the Gulf of Mexico and the Offshore Oil Service Industry. The following pages cover all the major ports from Corpus Christi to Venice, Louisiana and the Baptiste Collette.

If there is a port missing, it is because I have not made it to that section of the beach. Just give me a little more time. (> Port Fourchon, Belle Pass, etc.)

This booklet is a work in progress and more will be added as I go along. This edition is MSW 0.01

Let me take another few moments to acknowledge a few more captains for their contributions to my life and my work.....

Capt. Jerry Jalufka for his patience,

Capt. David Gormey for his relaxed nature,

Capt. Tom Watkins for his meticulousness,

Capt. B. J. Shirley for his running in fog tip,

Capt. Bruce Bryan for being my port captain,

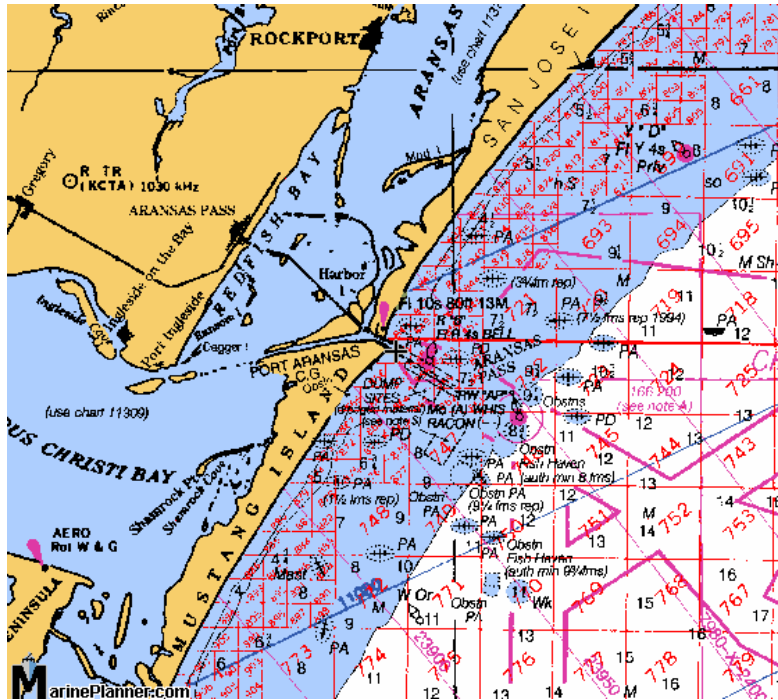
Capt. Mike Gay for not running me off when
I got our boat run off a job in Galveston
and

Marilyn Stanley - President of OOSI

For showing me the Golden Egg.

These men and women have showed me how to do what I do and without their instruction, I'm just another boat driver.

PORT ARANSAS



Port Aransas

Aransas Sea Buoy	N 27° 47' 15"
R "6" 4s	N 27° 49' 52"
	W 097° 01' 24"
R "8"	N 27° 49' 52"
	W 097° 01' 50"
Aransas Shrimp Channel Cut	N 27° 50' 51"

High range lights above Tesoro Dock. Dock faces north east and is unprotected from same.

Walking distance across ferry to Stop and Go.

Ship traffic.

Traffic runs on VHF 16

Pilots VHF 12 up to Corpus and Jetties

Tesoro on 16 - 10/2002

Yellow cab stands by on VHF 16.

•
•
•
•
•
•
•
•

Port Aransas near "R 6" N 27'49.44
W 97'01.26

Numbers good, confirmed 10/2002

Straight shot, plenty of room in jetties

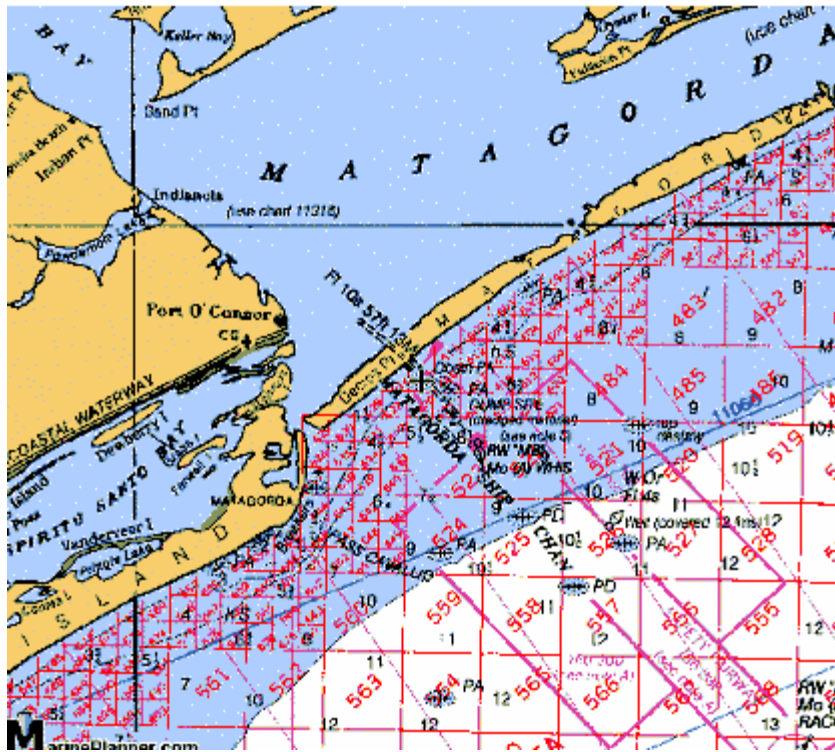
My experience with the channel is that it is a good idea to line up on the channel ranges at least around marker R"6", especially at night.

There is a lot of background lighting but the ranges are very plain. The channel, during the day seems to have a lot of small fishing vessels (seasonally) around the mouth of the jetties. When it is rough, it can make the entrance tricky with following seas. The ranges face SE so the prevailing seas are on your stern.

10/2002

Out the ICW to the west is a dock called OSI. It seemed to be a scrap yard where we were taking old casing and tubing. I put it here just FYI. The yard is north on a small canal just east of the tank farm before Ingleside Naval Yard. It is plainly marked and has green channel daymarks up the east side (would be left side outbound and right side up or inbound. Located near marker 51 and they stand by on VHF 16. 27'51.57 and 97'10.05.

Port O'Conner



Port O'Conner (mid channel fixes)

Matagorda Ship Channel 1&2	N 28' 23' 32
first inbound	W 096' 17' 23
R "4"	N 28' 24' 21
	W 096' 18' 20
Top of Longneck (turning port)	N 28' 26' 08
	W 096' 20' 16
G "111" Mat Channel/ICW intersect	N 28' 27' 16
	W 096' 21' 55
Port O'Conner Jetties mid 1&2	N 28' 26' 29
	W 096' 23' 42
Matagorda Jetties south tip	N 28' 24' 38
	W 096' 18' 39



Mid channel in ICW is maintained at about 20 feet
watch the banks and barge traffic.

Most notable land mark is the Jack up by day and round ball shaped storage tanks to
the east of that. Jetties run perpendicular in between.

Up Old River

Intersection where Old River crosses ICW.
Blind spots and traffic.
Above intersection is Turning Basin and then Phillips Bend.
Next is Brazos Harbor with Grain Elevators to the east.
Past barge docking area, next bend in the river leads to the
Stanco dock is followed by Williams Diesel and the M.&I. dock
Tide gate is just past these docks.
Barons shipyard is above the tide gate.

Eastbound ICW

Light house on point across from intersection.
Ship berths east of point.
Long space no development on North, Bridge Bait and then
Surfside Bridge. UNOCAL on South before bridge.

Tesoro Coastwide dock follows the bridge, last wiggle in the Freeport Wiggles and
then the Bridge Harbor Yacht Club. Muchowich #3 follows on the north.

Williams Diesel
979-233-5365

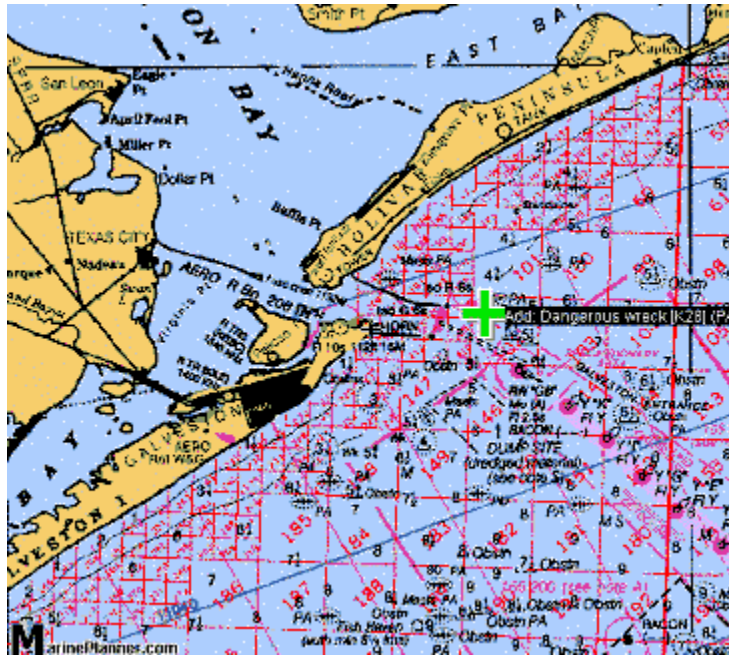
Stanco Marine
979-233-8044

OOSI Dispatch
1-800-622-1851

Signal Electronics
24 hour service
979-239-6969

Cummins Service
24 hour dispatch
1-800-474-7421

GALVESTON



Galveston

Galveston 29'17.777
 94'39.490
West of Racon and south of G7 R8

GALVJT 29'19.045
South of "G 5" "R 6" 94'40.000

Run the jetties on the green side, avoid crossing ship channel at the intersection by USCG Station, into Galveston Bay Channel.

There is 25 to 30' of water inside the green, but stay 1/2 mile off the jetties and the shore target. Shoaling around the point is located on the shore end of the jetties. 11-07-00

Noted 3 racons when approaching from the south. North most racon is the mid channel @ Galveston Bay Entrance.

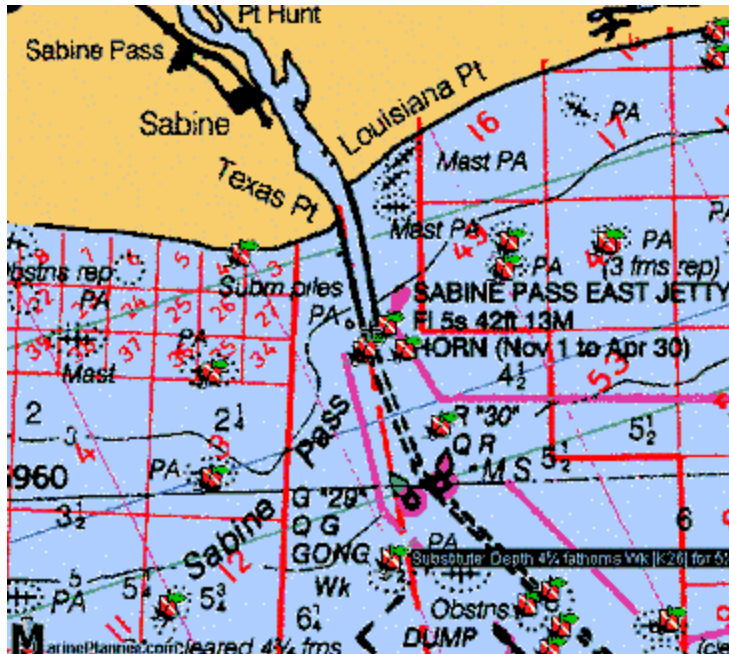
Seems to always be a large mass of targets in the Anchorage on the North and East side of the fairway in front of Galveston Entrance.

All major service company docks are located in the Galveston Bay Channel.
 Ships ID their location by dock number.
 Would be nice to have a map of docks with numbers.

**6 miles out of jetties and running 12 miles out
 Yellow Separation Buoys**

Inbound "A"		N 29'10'25	307' inbound	127'
outbound		W 094'27'11		
"K"		N 29'16'47		
		W 094'35'33		
"GB"		N 29'18'15		
		W 094'37'32		
"G3"		N 29'19'466		
		W 094'40'192		
"G9"		N 29'20'38		
		W 094'42'50		
"G1" turn to harbor from channel		N 29'20'35		
		W 094'45'53		
Lightering Areas	#1	N 28'35'		
		W 094'10'15		
	#2	N 28'40'		
		W 094'08		
East Gal Center Anchorage		N 29'16'		
		W 094'28'		

Sabine Pass



Sabine Pass, TX.

G29 R30 (SA2930)	N 29'35.925 W 93'48.627
G17 R18 (SA1718)	N 29'32.332 W 93'44.282
Sabine (from the Evelyn M.)	N 29'37'260 W 93'48'873
Safety Fairway (to Galveston) 30-40 miles due south of jetties	N 28'43' W 93'42'
High Island 376A	N 27'57'765 W 93'40'240
Sabine Bank Light Fl G 10s 11m actually a 1 sec white	N 29'28.3 W 93'43.4
Sabine Channel Sea Buoy	N 29'20.0

Whistle buoy Strobe Fl 2.5s Racon -- W 93'40.0
4.75 SE of Sabine Bank Light

There is plenty of water to move outside the channel once you clear the jetty buoys.

There is a lot of ship traffic and there are times when you need to move out of the channel.

Running channel is 13 in Sabine Pass. Lots of ship traffic.

Anadarko is near Rowen . Jack up rigs (05-2000).

Docking alongside at the Anadarko yard.

Slow bell to pilot station and shrimp boat area at beginning of piers.

Docks are east exposed like Harbor Island. Woke to strong east winds.

Back in Sabine 08-25-00 for a week on the Hannah Ray..

Diamond Offshore Base on VHF 72

Rigs Confidence and Endeavor on VHF 71

Tesoro Sabine - Stand by on VHF 9

Heading gulf ward the channel runs southeast past the pilot station then southerly then doglegs back towards the south east. The green side buoy past the pilot station heading gulf ward is where the first dogleg begins turning south. line up on the greens and you can hug it out

Back in Sabine 05, 2001 on Marilyn M. / Devon/PennzOil

Tesoro Sabine VHF 09 / PennzOil company set

Berg's Engine Service (409) 971-2976

5746 Dowling Rd. (409) 971-2902

Sabine Pass, TX. 77655

Travis / Lynn Cat Parts

Moody Marine Electronics (409) 971-2177

5262 Broadway

Sabine Pass, Tx. 77655

RadAR Repair

Replaced bearing pulse board on Evelyn M. 05-18-00 (Travis - about \$150) SSB

Transmit repaired and Print head on Weather fax - - Evelyn M 10/00

⋮

Alford's Supermarket (409) 736-2843
5897 W. Port Arthur Rd. (409)736-2153
Port Arthur, TX 77640

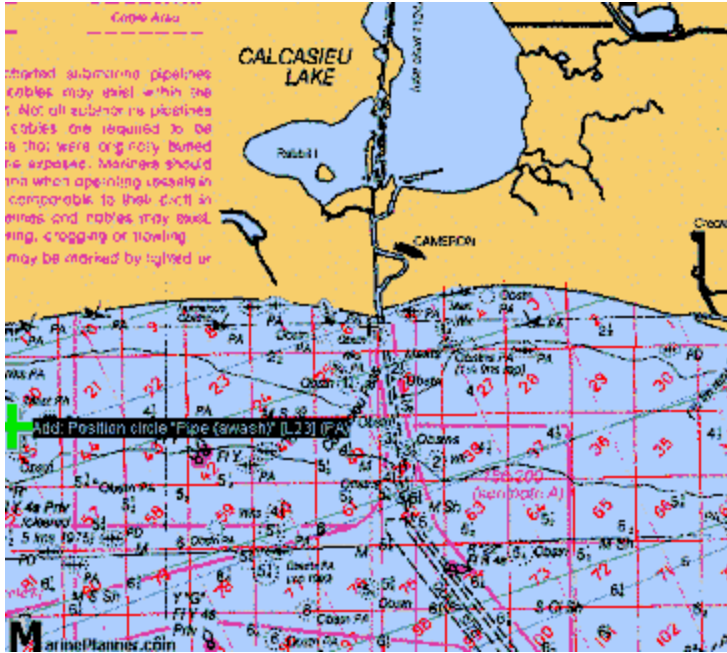
Get three movies with \$250.00 groceries per week
15.00 del charge after groceries

T's Aluminum Welding Fabricating (409) 971-2590
PO Box 311 (409) 720-2583
Sabine Pass, TX 77655

Repaired fire line damaged by crane operator 05-18-00 (2hrs at \$45.00 per) also
repaired pad eye damage where tires are fastened to boat. Evelyn M.

Port Hardware (409) 736-2811
6105 W. Port Arthur RD.
Port Arthur, TX. 77640

Cameron



Cameron, LA.

Outside Jetties	N 29°42'24"		
	W 93°21'15"		from
Loran			
G "39" R "40"	N 29°43'556"		
first set past end of jetties	W 93°20'358"		
G "41" R "42"	N 29°44'700"		
End of jetties	W 93°20'502"		
G "35" R "36"	N 29°41'73"		
just north of platform	W 93°20'095"		
G "27" R "28"	N 29°37'485"		
buoys at dog leg	W 93°19'315"		

•
•
•
•
•
•
•

You pick up distant red over red range markers
here from G27 R28
Red range lights are across (west bank) from pilot station
dredge pipeline before Monkey Island south cut / moved
June 2000

Further up river, past pilot station, distant white over white
ranges. Markers are up river past cut, old river, that leads
down to Ambar dock.

Lots of shrimp boat traffic, hanging in diamond shape blocking whole channel. Weird.
5/7/00 dredging operation in channel, river, well marked, yellows red and green
sides.

Channel and Monkey Island cut north and south on channel 13.

Pilot station on left at beginning of south cut, operations are in order around the cut

A.) Pilot station on corner - working channel 66

B.) DeHyCo - Fuel Dock and crane operations

C.) Oska Dock

1.) Newpark Environmental - offloaded waste cut boxes and tanks (Anadarko Sabine
job)

A.) Newpark Drilling - drilling material for Samedan Job.

2.) Baroid Dock - loaded pallets of well material (Anadarko Sabine job)

3.) ELI Dock - loaded empty cut boxes and tanks (Anadarko Sabine job)

A.) M&I Dock - returned unused material, drilling material (Samedan job)
Working out of MI for Mariner Energy 11-09-00
Wood dock to the south is MI property
ok for docking when standing by.

B.) McCall docks - all painted blue.....

C.) Francis Drilling Fluids

4.) Cameron Ferry One - crosses Monkey Island North Cut - Channel 13 VHF.

Old Tesoro dock for overnights

5.) L&L Fuel Pier - Fuel, water and oil (Anadarko Sabine job)

6.) Tesoro Coastwise - in channel (East and West) -
point of interest
working out of Central dock for Samedan 6/00

7.) Poki Boat factory -(Zapata) point of interest

8.) Cameron Ferry #2 - crosses Calcasieu River north of Monkey Island - 13 VHF

Tesoro Marine (Central) Just past, north, North Monkey Island Cut on the East side
of Calcasieu Pass. Working channel 18 VHF

Keys Electric Services Inc. 409-729-7605 Don
DBA - Climate Services
1402 Droddy Dr.
Port Neches, Tex 77651
New Heater Elements Evelyn M 11/15/00

Wilson's Diving Service 318-775-5253 Wilson
Captain on Cameron Ferry #2
Dive wheels Evelyn M.
10-18-00

Electricians
775-5385 New Home Electrical
775-5621 Wendells Hardware and Electrical

Power Systems Inc 713-928-6361
Clutch Repair
Torsional Coupling POB on Evelyn M.
10-19-00

Stewart Supply 713-674-7273
8905 Market
Houston, Tx
Replaced SOB Clutch 01/28/01
Evelyn M.

Gulf Coast Supply

Cameron, LA. 70631
(337) 775-5226 (Tesoro)
C/O Samedan Office #4
Samedan Dispatch #4
6/7/00
Dispatcher - Randy and Ken

8/03/00
Dispatchers - Royce and Phillip
(337) 775-5781 voice
(337) 775-5782 fax

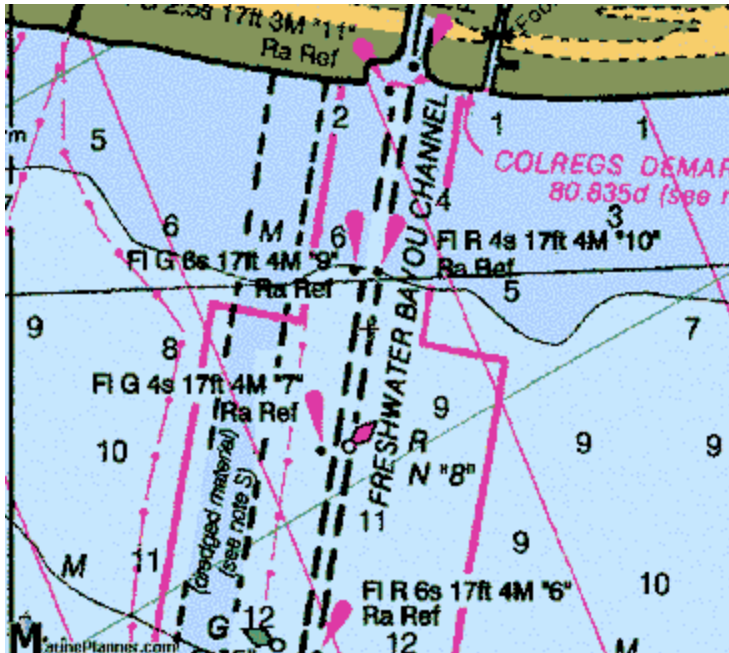
10/01/00
Switched to Downstairs Dispatchers
Ronnie, Jerome

11/09/00 Back in Cameron / Mariner Energy at the MI dock

Mariner Dispatch - Neal / Randy

337-775-5943

Freshwater City / IntraCostal City



IntraCoastal City, LA
 FreshWater City (FreshWater Bayou)

FW Bayou run, Marilyn M. 28-Aug-01

Near Sea Buoy 29'27.83 N
 91'18.93 W

29'28.62
 92'19.21

29'30.74
 92'18.79

29'31.33
 92'18.66

29'31.99

92'18.50

29'32.44

92'18.42

FW City Locks 29'33.190 N
92'18.294 W

29'35.47

92'17.82

29'37.58

92'16.33

29'39.80

92'15.40

29'43.66

92'14.57

29'44.62

92'13.30

Asco ICCY 29'47.571 N
92'08.582 W

Run channel from sea buoy all the way, channel is very shallow, 13' is a lot of water. No jetties, day marks with some lights. FWC first slip inshore on left, shallow. Shrimp boat dock, next, then the locks on VHF 14. Hold in locks with two lines and give list of cargo and vessel draft for locks. Raccoons and Deer!

Proceed north out of locks to ICCY.

Waypoints are the channel run up the bayou. Water is very shallow, running hooked up in the bayou. Locks VHF 14, Bayou is VHF 13?

IntraCoastal City, Chevron, Texaco, left at 4 way intersection, stay in the middle.

Asco is at the far north end on the left past the Devon Dock.

Coming into ICCY (heading north towards the east) lights on the horizon.



Intersects ICW near marker 161



Baroid and MI on the left, shrimp boat dock next

Continue up to daymark 4 Red

Shallow, stay in the middle always

Left at #4 Red, and then right to Devon and Asco.



Atchafalaya River

Insert Chart Here

Thanks to Capt. Rich for helping me get in and out of here.

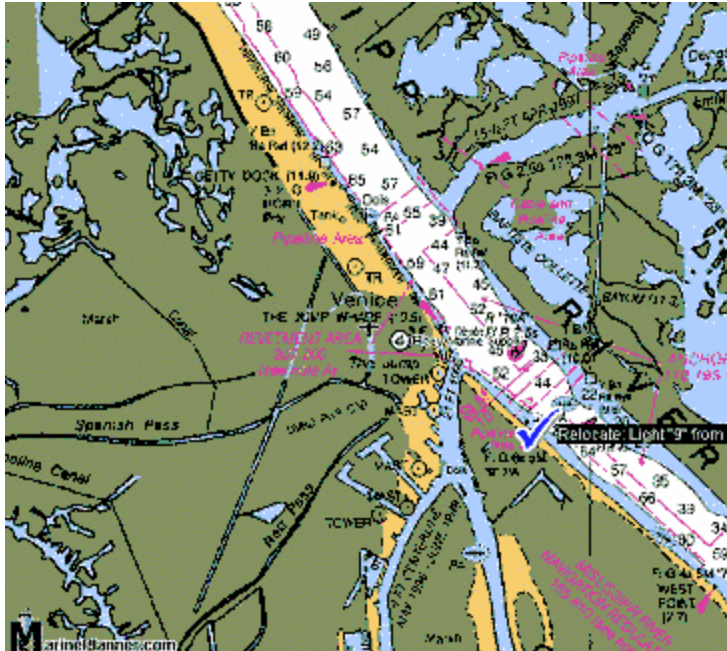
Atchafalaya River, Bayou Chene, Bayou Boeff, IntraCoastal Waterway

The main point of note here is to run the channel from the sea buoy in and do not cut out bound, stay in the marked river channel and look out for floating logs and debris. The river channel and the river itself is several hours to Morgan City.

The Bayou Chene is a good way to avoid the locks on the ICW in Morgan City if you are going to Seacraft Shipyard. The bayou is wide, well marked and well traveled. Stay in the middle and avoid the shoaling at the bayou bends.

.....

Venice, La.



Venice, La.

Dock (just past L&L Fuel) Ambar	N 29°16'13.3 W 089°21'15.3
Baptiste Colette (from chart)	N 29°22'18 W 089°18'04
Main Pass (from chart)	N 29°21'48 W 089°12'05
The Jump (from chart)	N 29°16'26 W 089°21'00

Shallow water extends all sides from the mouth of Baptiste Colette. Route to rig we were working is marked via various waypoints to avoid shallows and for running in fog. Route outbound follows: (lat/long from Evelyn M. gps)

BAB 1&2 (mouth of jetties / daymark 1&2)	N 29'24'226 W 089'18'527
BAB 21 (bouy 21 / 90 degree turn)	N 29'25'170 W 089'18'530
BBQ Pits (well heads look like bbq pits)	N 29'25'265 W 089'16'950
1000 L (looks like 1000 leg platform)	N 29'23'724 W 089'13'000
CornCob (field looks like corn cob on radar)	N 29'19'490 W 089'03'100
MP 151 (main pass block - jack up rig)	N 29'11'316 W 088'53'220

VHF 13 port side and river running.
Lower end of Mississippi River delta. Current at 2-10 knots
Baptise Collette / The Jump - Mississippi River crossing.
Ship traffic, barges, crew and work boats, fishing boats.

Stumpf's Supervaluе Foods on Hwy 23 walking distance	534-2376	FAX 534-2237
Ace Hardware on Hwy 23, Venice	534-2091	
Regions Bank on Hwy 23, Venice walking distance	534-2583	
Riverside Restaurant on Hwy 23, Venice walking distance	534-9254	
Air Logistics - 42011 Hwy 23, Venice	534-2631	
Ellzey Marine Hardware - 42991 Hwy 23, Venice walking distance	534-2391	
Popich Shipyard vessel haulout	150 Offshore Shipyard Road 534-7155	534-2277



Not sure what the area code is for Venice, La. But you need it !!

Waypoints of some interest

Location-Block	Latitude	Longitude	WayPoint
Bolivar Shipyard	29' 24.321	94' 44.581	BOLVSY
Cameron G1-R2 G3-R4	29' 22.617	93' 13.333	CA1234
Cameron G27-R28	29' 37.485	93' 19.315	CA2728
Cameron G35-R36	29' 41.693	93' 24.452	CA3536
Cameron G7-R8-G9	29' 31.187	93' 13.652	CAM789
Cameron Jetties	29' 44.413	93' 20.428	CAMJET
Cameron Sea Buoy	29' 20.064	93' 13.382	CAMSEA
East Cameron 332	28' 09.864	92' 51.70	EC-332
Freeport	28' 55.360	95' 16.980	-FRPT-
Freeport Jetties-Old JackUp	28' 56.271	95' 17.938	FRJAK
Galveston 303	28' 52.835	95' 02.296	GA-303
Galveston 333	28' 47.071	95' 12.458	GA-333
Galveston G5-R6	29' 19.803	94' 40.222	GAL56
Galveston G7-G8	29' 20.397	94' 41.362	GAL78
Garden Banks 236	27' 45.683	93' 08.326	GB-236
Garden Banks 240	27' 44.149	92' 56.036	GB-240
Garden Banks 367	27' 35.536	93' 11.972	GB-367
High Island 244	28' 27.083	93' 38.249	HI-244
High Island 376 A	27' 57.765	93' 40.240	HI-376
High Island 447B	28' 22.04	94' 07.77	HI447B
High Island 52	29' 26.50	94' 08.04	HI-52
High Island 582	27' 54.698	94' 23.930	HI-582
High Island A-517	28' 08.950	94' 05.658	HI-A517
High Island A530	28' 07.02	94' 22.25	HIA530
High Island A563	27' 57.50	94' 23.19	HIA563
High Island A567	27' 59.039	94' 11.665	HIA567
Main Pass 151	29' 11.316	88' 53.220	MP-151
MI Dock Cameron	29' 47.564	93' 19.411	CAMMID
Offshore Oil #3	28' 58.069	95' 17.131	OOSI-3
Perfect Balance	28' 21.288	92' 46.196	PERBAL



Waypoints of some interest

Perfect Balance	28' 21.288	92' 46.196	PERBAL
Sabine G17-R18	29' 32.332	93' 44.282	SA1718
Sabine G33-R34	29' 37.661	93' 49.181	SA3334
Sabine G17-R18	29' 40.276	93' 49.938	SABJET
Sabine G21-R22	29' 40.981	93' 50.128	SA2122
Sabine G27	29' 41.331	93' 50.287	SA27
Sabine G29-R30	29' 41.832	93' 50.633	SA2930
Sabine R32	29' 42.342	93' 51.025	SA32
Sabine R34	29' 42.868	93' 51.432	SA34
Stand by buoy	27' 56.16	92' 58.39	NA
Stand off buoy	28' 27.400	93' 10.500	NA
Stand off buoy	28' 08.216	92' 59.13	NA
Stand off buoy	28' 06.465	94' 02.871	NA
Stand off buoy	28'25.250	93' 57.745	NA
Stand off buoy	27' 57.500	93' 15.020	NA
Stand off buoy	27' 56.41	93' 12.48	NA
Tesoro Central Cameron	29' 48.327	93' 20.771	CAMTES
Tesoro Central Galveston	29' 19.425	94' 46.871	GALTES
Tesoro Central Sabine	29' 43.270	93' 51.940	SABTES
Vermillion 76	29' 15.04	92' 23.51	VE-76
Vermillion 77	29' 17.46	92' 23.66	VE-77
West Cameron 312	29' 11.324	93' 35.367	CAMFOR
West Cameron 427	28 43.112	93' 17.032	WC-427
West Cameron 463	28' 33.984	93' 16.004	WC-463
West Cameron 465	28' 34.170	93' 20.298	WC-465
West Cameron 499	28' 26.188	93' 26.752	WC-499
West Cameron 599	28' 07.777	93' 05.863	WC-599
West Cameron 614	28' 03.185	93' 27.149	WC-614
West Cameron 638	28' 02.29	93' 13.79	WC-638
West Cameron 643	27' 58.871	93' 02.130	WC-643

Thanks to Capt. Jim for helping me proof read this stuff.

Thanks to Capt. Jerry Kelly for title suggestions.

Mostly Platforms and docks, good fishing at most.

Perfect Balance was just a spot where I noticed a Moonrise and a Sunset at the same moment.

Waypoints noted in booklet are 6 letters for entry into the Furuno GP30-31 GPS.

Also of note are the stand by buoys should you find yourself out, needing an overnight mooring. Watch for long attached lines on some.

Notes

Notes



Notes

•
•
•
•
•
•
•
•

•
•
•
•
•
•
•
•

•
•
•
•
•
•
•
•
